

A. Parts list for small & octagon anchor kit: # AKS (42x42 & 78x78 Octagon mat)

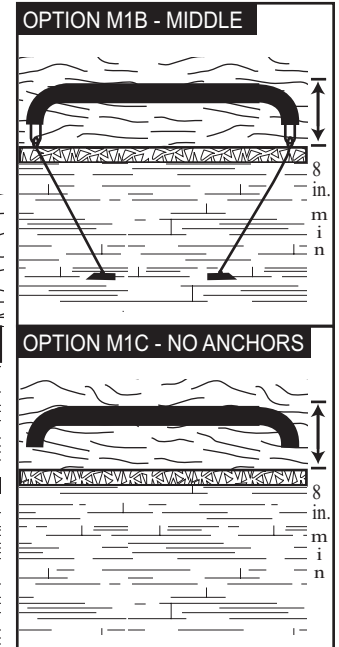
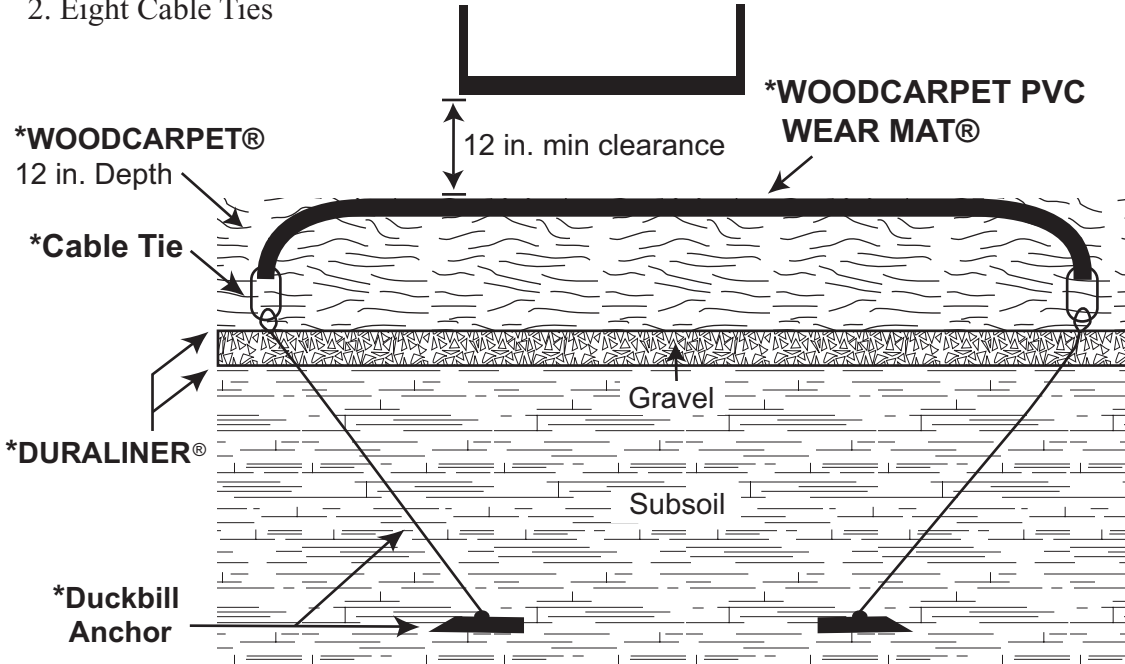
1. Eight Duckbill Anchors
2. Eight Cable Ties

B. Parts list for medium anchor kit: Part #AKM (42x78 mat)

1. Ten Duckbill Anchors
2. Ten Cable Ties

C. Parts list for X-large anchor kit: Part # AKL (78x90 mat)

1. Twelve Duckbill Anchors
2. Twelve Cable Ties



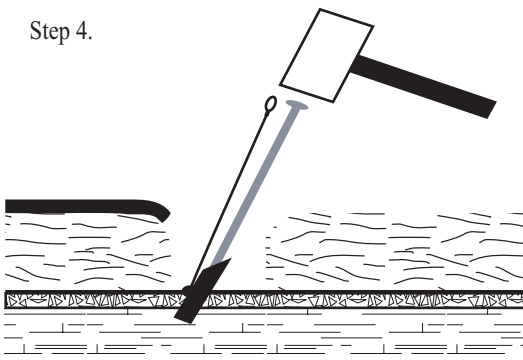
*PRODUCTS WE SUPPLY

D. Application: Kick-out areas on playground surfaces (ie. swings, slide exits, tire swings).

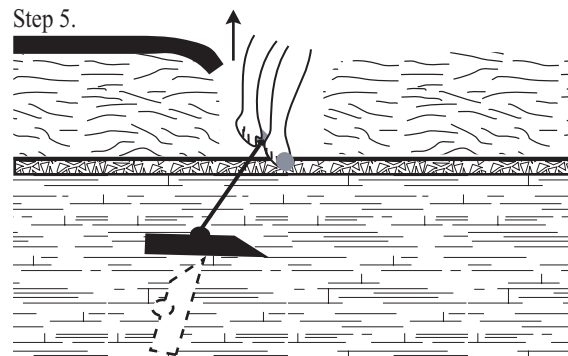
E. Installation Procedure:

1. In the kick-out area ensure that there is a minimum of 8 in. (200mm) of WOODCARPET® that is level and compacted. For better accessibility, install the mat on the top of the WOODCARPET®. If installing in the middle, remove some WOODCARPET® but leave a minimum of 8in. under the mat. If you are not anchoring the mat skip to step 7.
2. Lay out the mat (smooth side up) to cover the equipment's kick out area.
3. Under the edge of the mat, dig out a channel in the WOODCARPET® to allow approximately 6 in. (160mm) of the mat edges to drop down into the channel. It may be necessary to round the edge of the WOODCARPET® under the mat to allow the edges to hang down into the channel.
4. Place anchors adjacent to the anchor points on the WOODCARPET PVC WEAR MAT®. Using the steel drive rod, drive the duckbill anchor into the subsoil until the loop on the end of the cable is the only thing showing above the drain system surface. Twist and pull the drive rod back out.
5. Insert the steel drive rod through the cable loop and pull upward about 3 in.(75mm). The upward pull on the cable rotates the anchor into a horizontal locking position.
6. Loop the tie wrap (included with the anchor kit) through a hole on the mat edge and through the loop on the end of the anchor cable. Tighten the tie wraps to provide tension, causing the edges of the mat to drop into the channel.
7. Refill and compact the channel around the edge of the mat with WOODCARPET®.
8. Ensure that the vertical distance between the underside of swing seats, when occupied, and the WOODCARPET PVC WEAR MAT® or WOODCARPET® is a minimum of 12 in. (300mm), as per ASTM F1487 section 8 and as per CAN/CSA-Z614 section 15.
9. Ensure that the height of slide exit regions above the WOODCARPET PVC WEAR MAT® or WOODCARPET® are no greater than 11 in. (275mm) for slides with an elevation no greater than 48 in. (1220mm) and between 7 in. and 15 in. (180mm and 380mm) for slides with an elevation greater than 48 in. (1200mm) as per ASTM F 1487 section 8 and as per CAN/CSA-Z614 section 15.

Step 4.



Step 5.

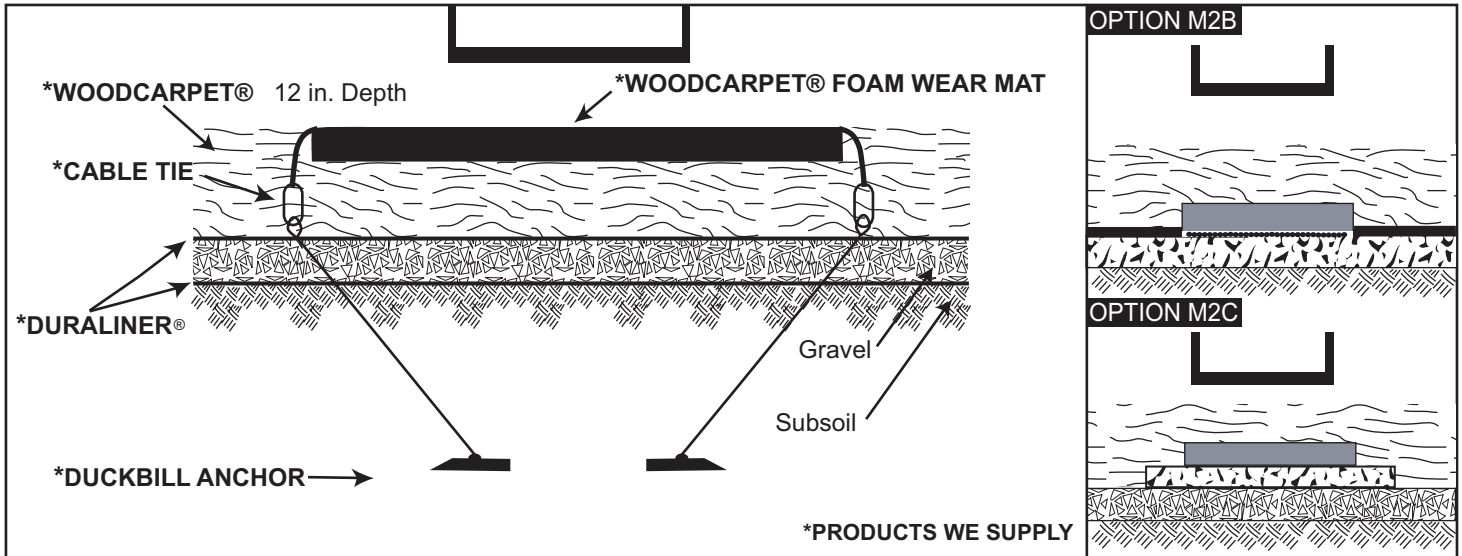


A. Parts List for Small Anchor Kit:

- Part# AKDS (44x44 mat)**
1. Four Duckbill Anchors
2. Four Cable Ties

B. Parts list for Large Anchor Kit:

- Part# AKDL (44x74 mat)**
1. Six Duckbill Anchors
2. Six Cable Ties



C. Application: Kick-out areas on outdoor playground surfaces (ie. swings and slide exits)

D. Installation procedure for anchoring the mat on top of the WOODCARPET®:

1. In the kick-out area ensure that there is a minimum of 8 in. of WOODCARPET® that is level and compacted.
2. Lay out the mat (smooth side up) to cover the equipment's kick out area.
3. Under the edge of the mat, dig out a channel in the WOODCARPET® to allow the mat edges to drop down into the channel.
4. Remove the top 2 in. of WOODCARPET® from under the foam portion of the mat so that the mat does not protrude above the WOODCARPET® surface.
5. It may be necessary to taper the edge of the WOODCARPET® under the mat to allow the mat edges to slope down into the channel at approximately 45°.
6. Place duckbill anchors adjacent to the anchor points on the mat. Insert a drive rod into the duckbill anchor and drive the duckbill anchor into the subsoil until the loop on the end of the cable is the only thing showing above the drain system surface. Twist and pull the drive rod back out. For hard or stony soils, drill a hole into the subsoil with a masonry bit before driving the duckbill anchor into the subsoil.
7. Insert the steel drive rod through the cable loop and pull upward about 3 in. The upward pull on the cable rotates the anchor into a horizontal locking position.
8. There are anchor holes located around the edge of each mat, including two at each corner. At each corner, bend the mat edges down so that the two anchor holes line up with each other. Loop a cable tie (included with the anchor kit) through the two anchor holes and then through the loop on the end of the duckbill anchor cable. After attaching all cable ties, tighten the cable ties to provide tension, causing the edges of the mat to drop into the channel.
9. Refill and compact the channel around the edge of the mat with WOODCARPET®.
10. Ensure that the vertical distance between the underside of swing seats, when occupied, and the WOODCARPET® FOAM WEAR MAT or WOODCARPET® is a minimum of 12 in. (300mm), as per ASTM F1487 section 8 and as per CAN/CSA-Z614 section 15.
11. Ensure that the height of slide exit regions above the WOODCARPET® FOAM WEAR MAT or WOODCARPET® are no greater than 11 in. (275mm) for slides with an elevation no greater than 48 in. (1220mm) and between 7 in. and 15 in. (180mm and 380mm) for slides with an elevation greater than 48 in. (1200mm) as per ASTM F 1487 section 8 and as per CAN/CSA-Z614 section 15.

E. Installation procedure for glueing on top of the DURADRAIN®:

1. After the DURADRAIN® has been installed, place the WOODCARPET® FOAM WEAR MAT on top of the DURADRAIN® at the kick-out area (do not use adhesive yet).
2. Use a utility knife to cut the fabric (bonded to the top of DURADRAIN®) around the edge of the mat. Remove the mat and then remove the piece of fabric.
3. After thoroughly cleaning the under side of the mat and the exposed top surface of the DURADRAIN®, then apply a multi-purpose polybutum adhesive to the under side of the WOODCARPET® FOAM WEAR MAT. Follow the manufacturer's instructions on adhesive container.
4. Place the WOODCARPET® FOAM WEAR MAT on top of the DURADRAIN® in the kick-out area. Press down firmly and apply weight if necessary to the top of the WOODCARPET® FOAM WEAR MAT to ensure good and complete surface contact with the DURADRAIN®.
5. Install WOODCARPET®.